



Greater Los Angeles Homeless Count

2019 Results



LAHSA

Updated June 5, 2019

BEHIND THESE NUMBERS...

are our neighbors

THAT'S why we count.

Thank you to the thousands of volunteers, partners, and community service providers who make the Homeless Count possible, and who have helped our homeless services system reach more people than ever before.





The diagram features a central blue circle on the left containing the text 'Point-in-Time Count'. Four yellow circles are arranged in a vertical line to the right of the central circle. Lines connect the central circle to each of the four yellow circles. The yellow circles contain the following text from top to bottom: 'Street Count', 'Shelter Count', 'Youth Count', and 'Demographic Count'. The background of the slide shows a person working at a desk with various papers and a water bottle.

Point-in-Time Count

Street
Count

Shelter
Count

Youth
Count

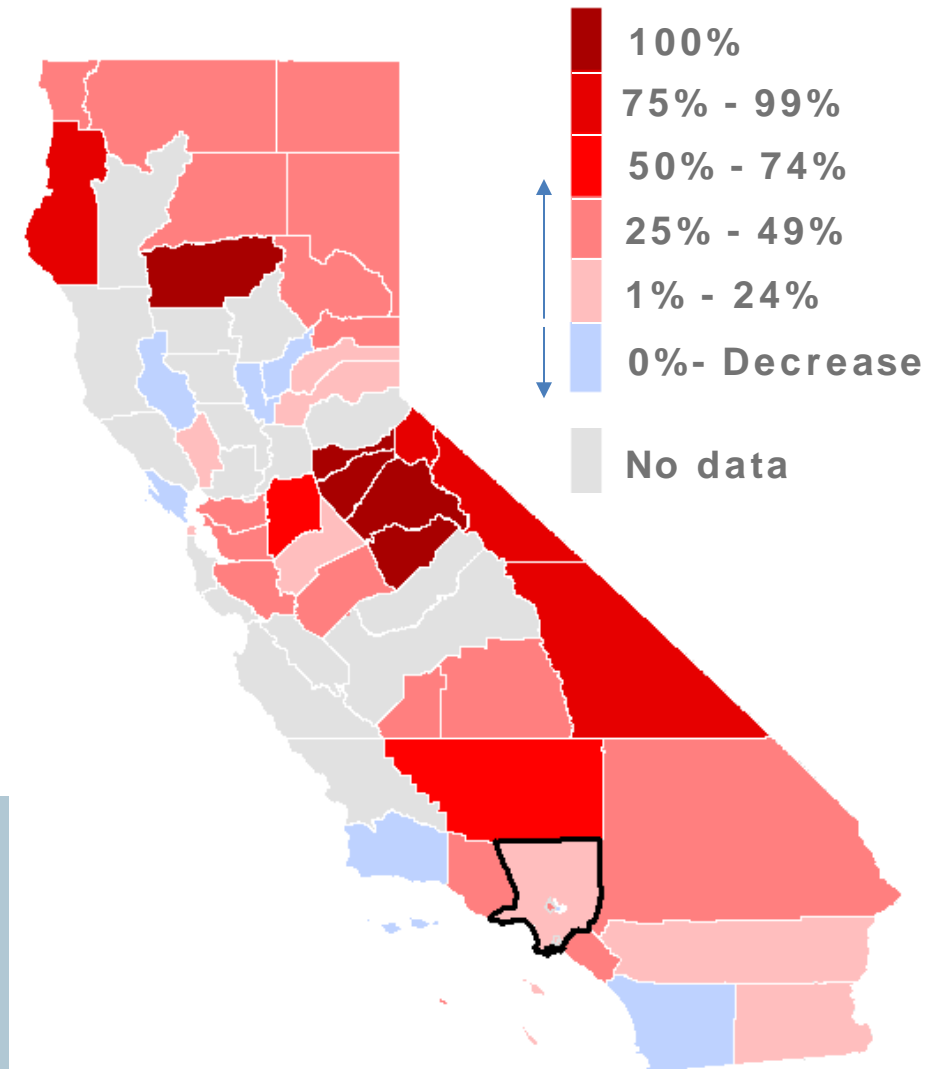
Demographic
Count

- Federally mandated PIT Count
- HUD approved methodology
- USC Statistical & Demographic Consultant

The affordable housing crisis is driving a regional increase in homelessness

- Rising homelessness is a statewide challenge
- The simple average increase among reporting areas statewide is +35%
- LA is the least affordable housing market in the United States*

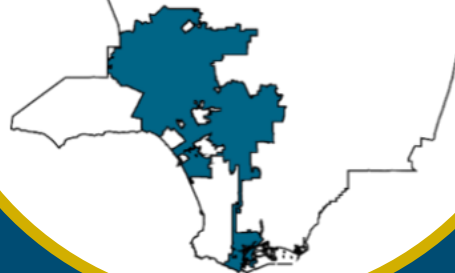
Percent Change for CA
Continuums of Care
between 2017 and 2019
Homeless Counts ⁴



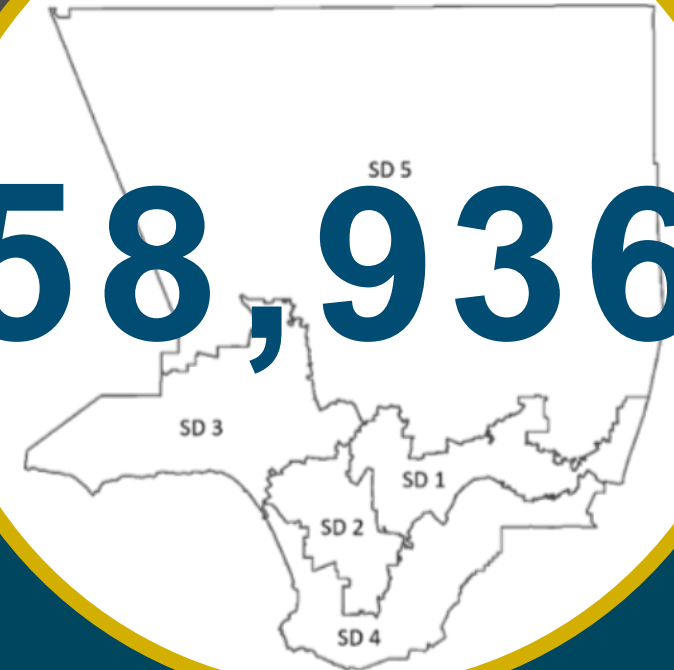
People
experiencing
homelessness
at point-in-
time count

**CITY OF LOS
ANGELES**
16% Increase

36,300



58,936

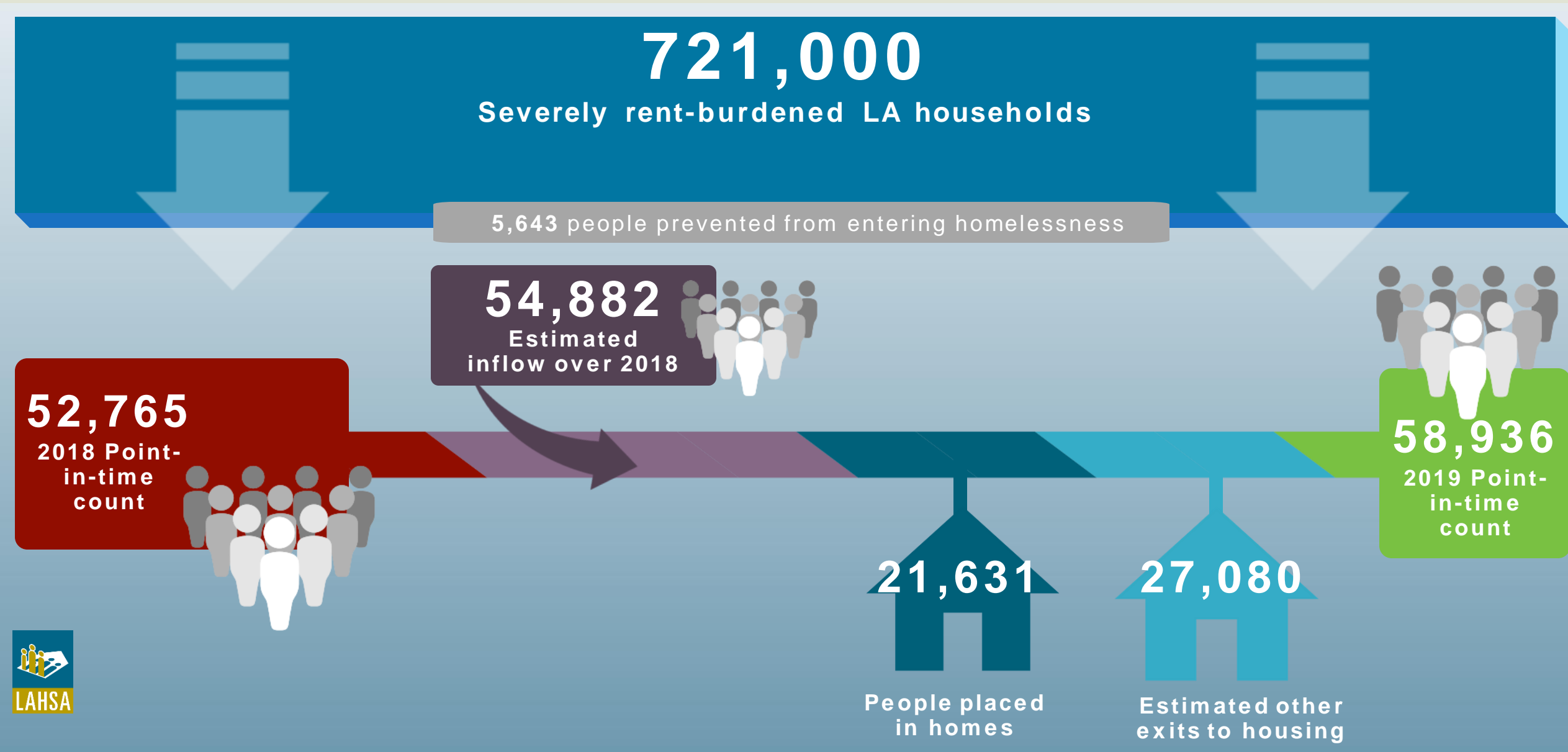


**COUNTY OF
LOS ANGELES**
12% Increase

The LA CoC total number was 56,257 a 12% increase from 2018. The LA CoC is Los Angeles County excluding Glendale, Pasadena, & Long Beach CoCs.

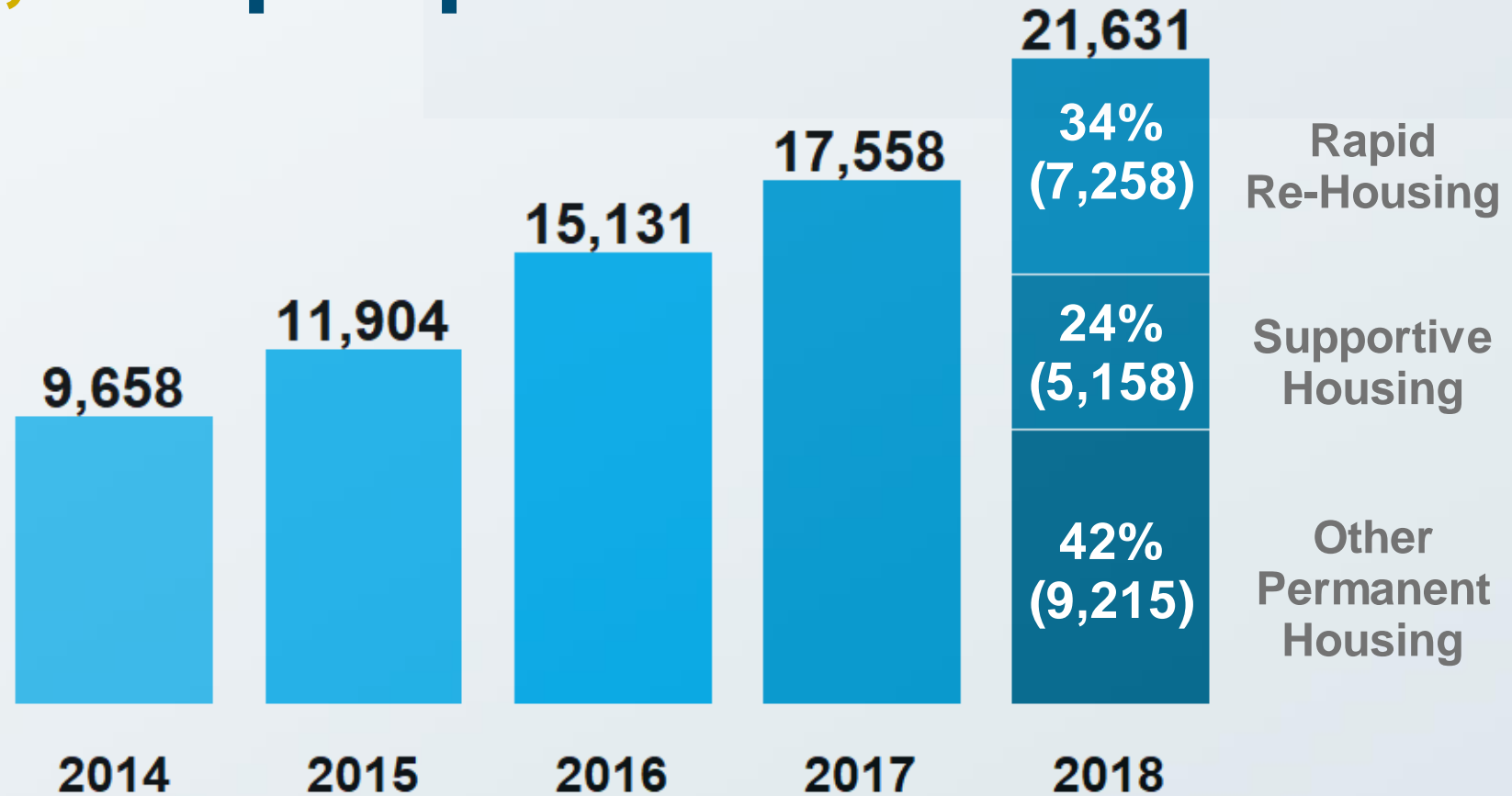
We housed **more people than ever**, yet our housing affordability crisis drove a net rise in homelessness

6



We housed **21,631** people in 2018

Housing placements increased 23% from last year and more than doubled since 2014



Housing Placements LA County 2014 - 2018

However, economic factors are **driving** increases in homelessness



Wages have not kept pace with rental cost

An LA renter earning minimum wage (\$13.25/hr) would need to work 79 hours per week to afford rent on a 1-bedroom apartment*

*The Federal Home Loan Mortgage Corporation, "Rental Burden by Metro" 2019



721,000 LA County households are severely rent-burdened**

1/3 of LA households spend more than 50% of their household income on rent

**Joint Center for Housing Studies of Harvard University, "The State of the Nation's Housing" 2018



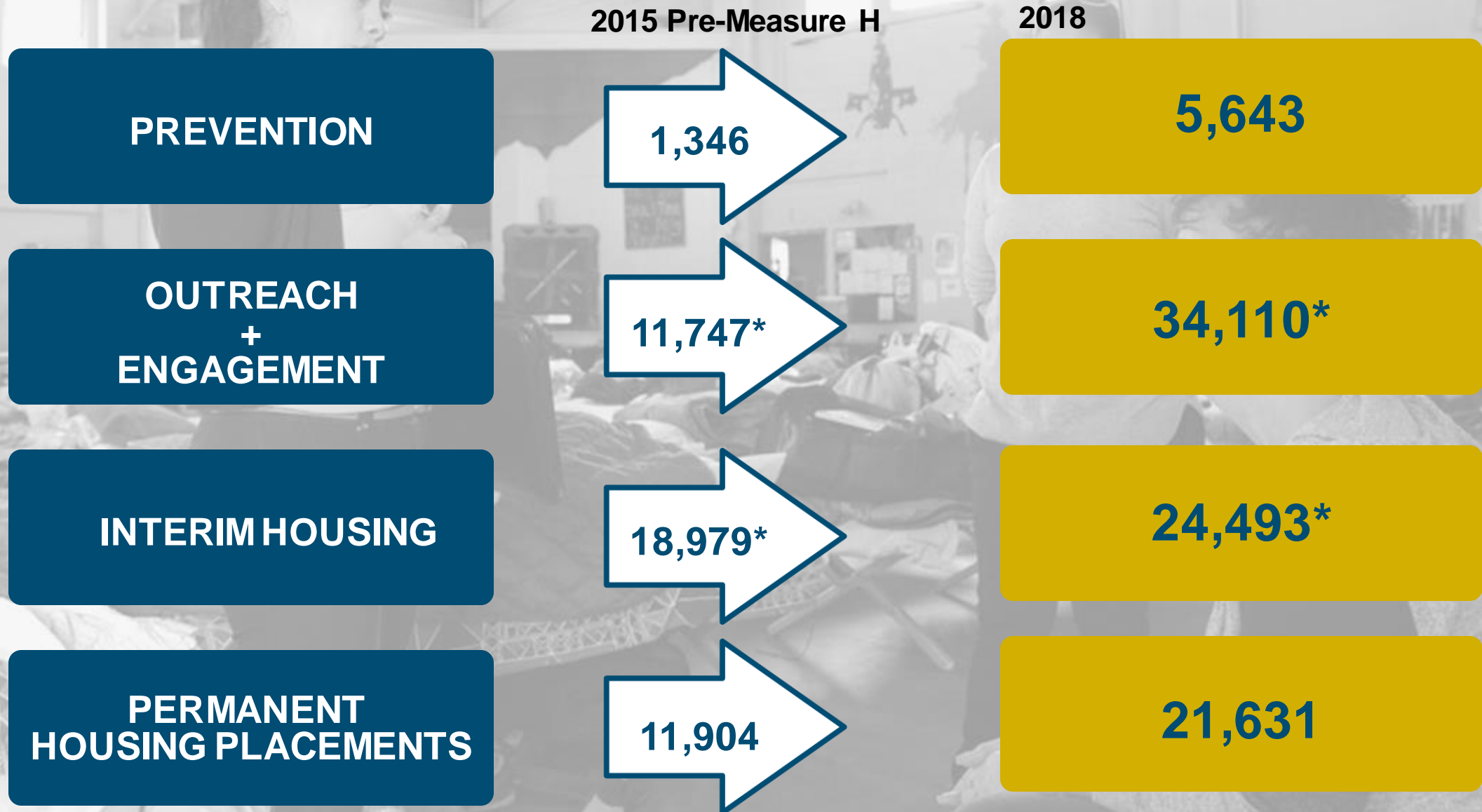
LA needs 516,946 new affordable housing units

To meet the needs of low-income renters***

***California Housing Partnership Corporation. (May 2019) Los Angeles County Annual Affordable Housing Outcomes Report.

We are helping more people than ever

9



*LA CoC excludes Glendale, Pasadena, and Long Beach CoCs; Permanent Housing Placements and Prevention include all 4 CoCs in LA County



Thousands of new supportive and affordable housing units are being built

- 72% of Prop HHH funds are already committed to build 5,303 units

Through the County and City of Los Angeles's investments:

- Approximately 1,400 units scheduled to open in fiscal year 2019-20
- 10,000+ units in the pipeline (committed and 2019 projected funding)

Insights from the **2019** Count Results



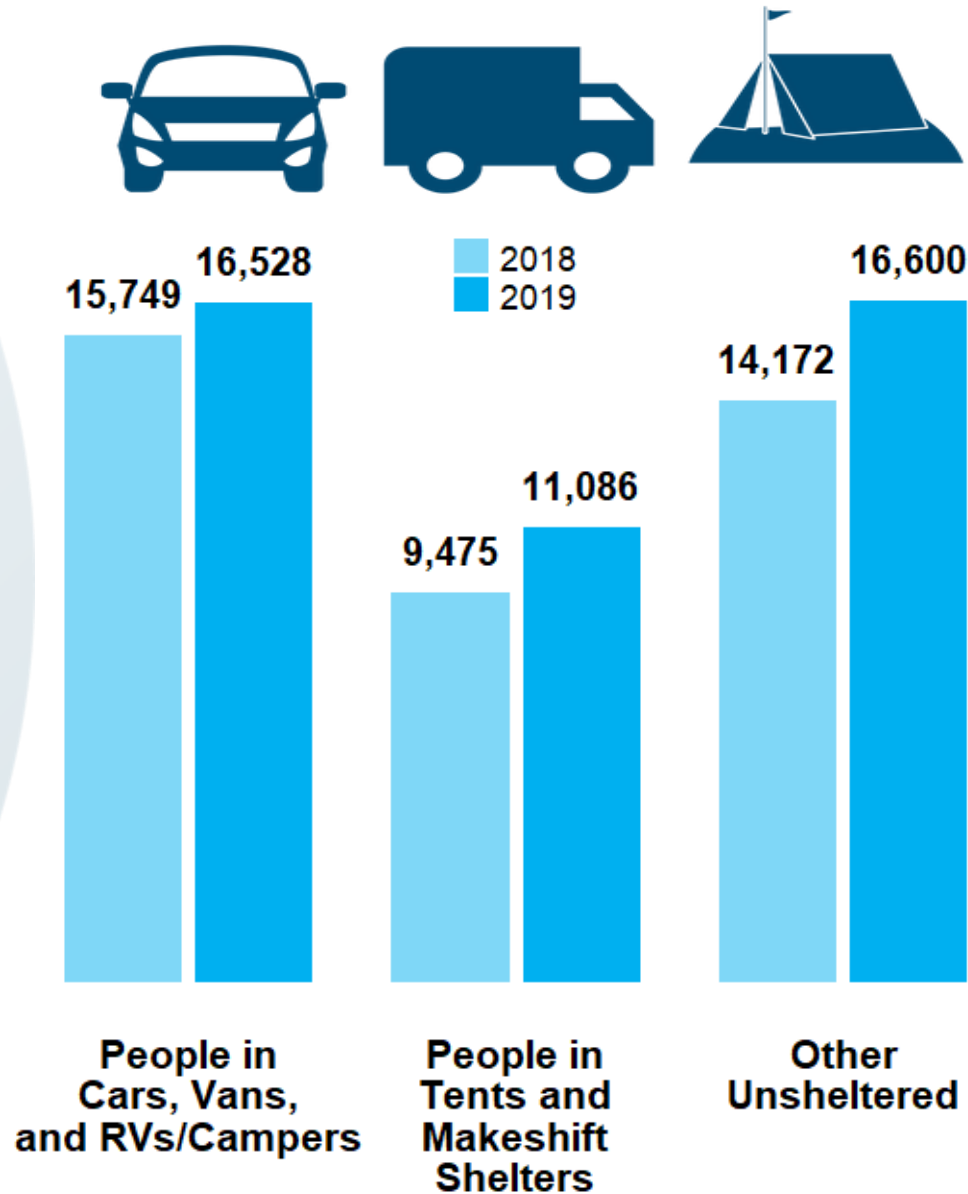
Homelessness remains **visible** on our streets¹²



44,214
(75%) Unsheltered
Countywide



14,722
(25%) Sheltered
Countywide



Key Facts:

- Outreach staff increased to over 800 people with expertise in physical, mental health and substance use disorder
- Countywide outreach coordination
- Intensive field-based service expansion for those with serious mental illness
- Safe Parking program implementation

More people are being housed through Interim¹³ Housing



44,214

(75%) Unsheltered
Countywide



14,722

(25%) Sheltered
Countywide

1,841

New Interim Housing
beds (2018-2019)

27%

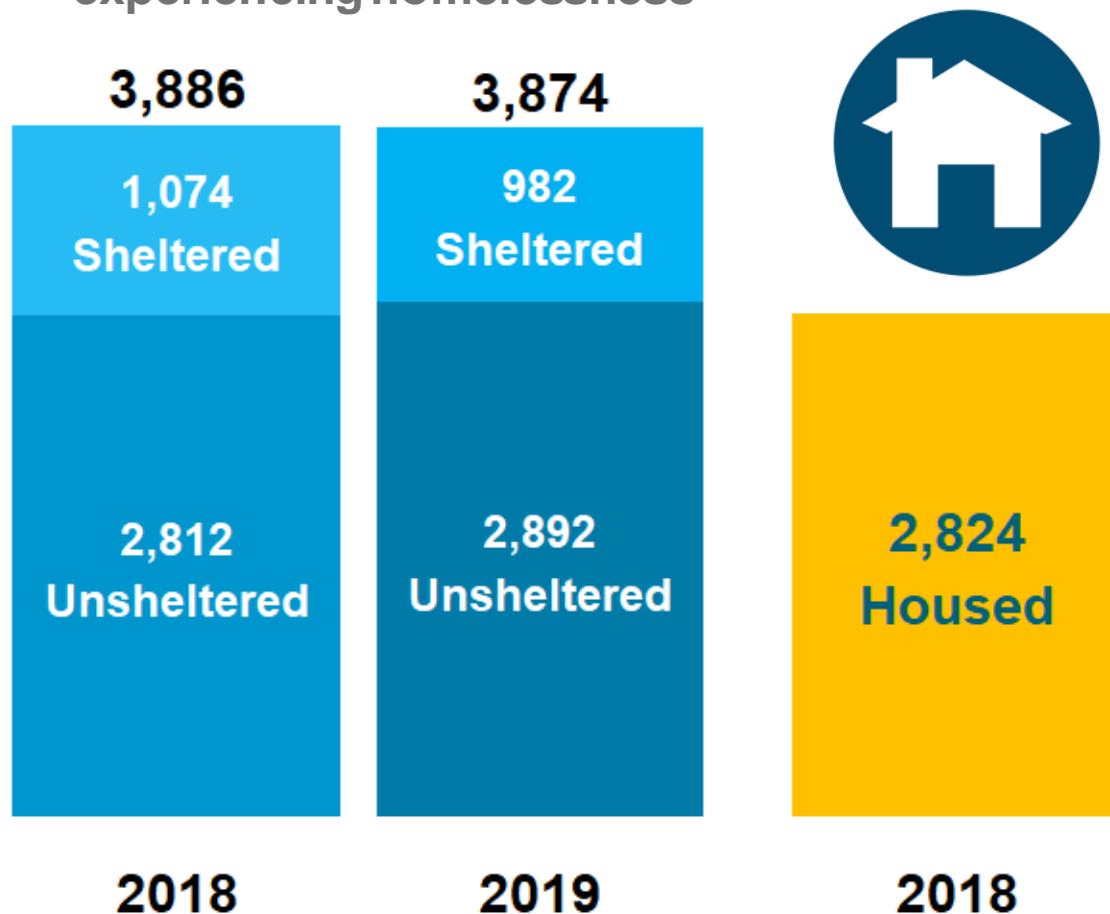
of participants exit to
Permanent Housing

Key Facts

- Increased bed rates to provide enhanced case management
- Enhanced Mental Health services
- High acuity individuals are being sheltered at higher rates
- More than 1,600 beds in pipeline for 2019-2020

Veteran homelessness slightly decreased

Veterans and family members
experiencing homelessness



KEY FACTS:

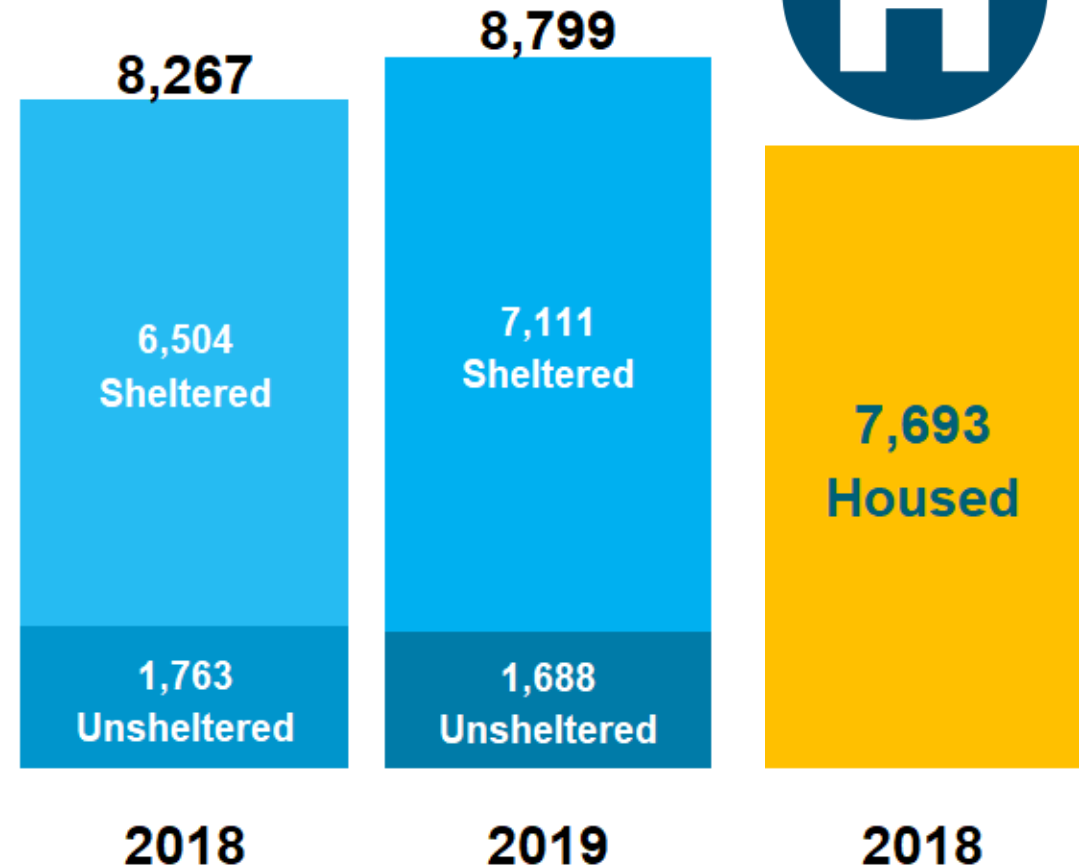
- HUD-VASH program targeted to the most vulnerable Veterans
- Homeless prevention programs expansion
- Veteran Peer Access Network (VPAN) to assist Veterans accessing services through the use of peers

Family members experiencing homelessness¹⁵ increased 6.4%

KEY FACTS:

- Homelessness prevention funding expansion for families
- Interim housing for families increased – more family members are sheltered.
- Rapid re-housing expansion
- Diversion/problem-solving specialists in each SPA

Family members experiencing homelessness



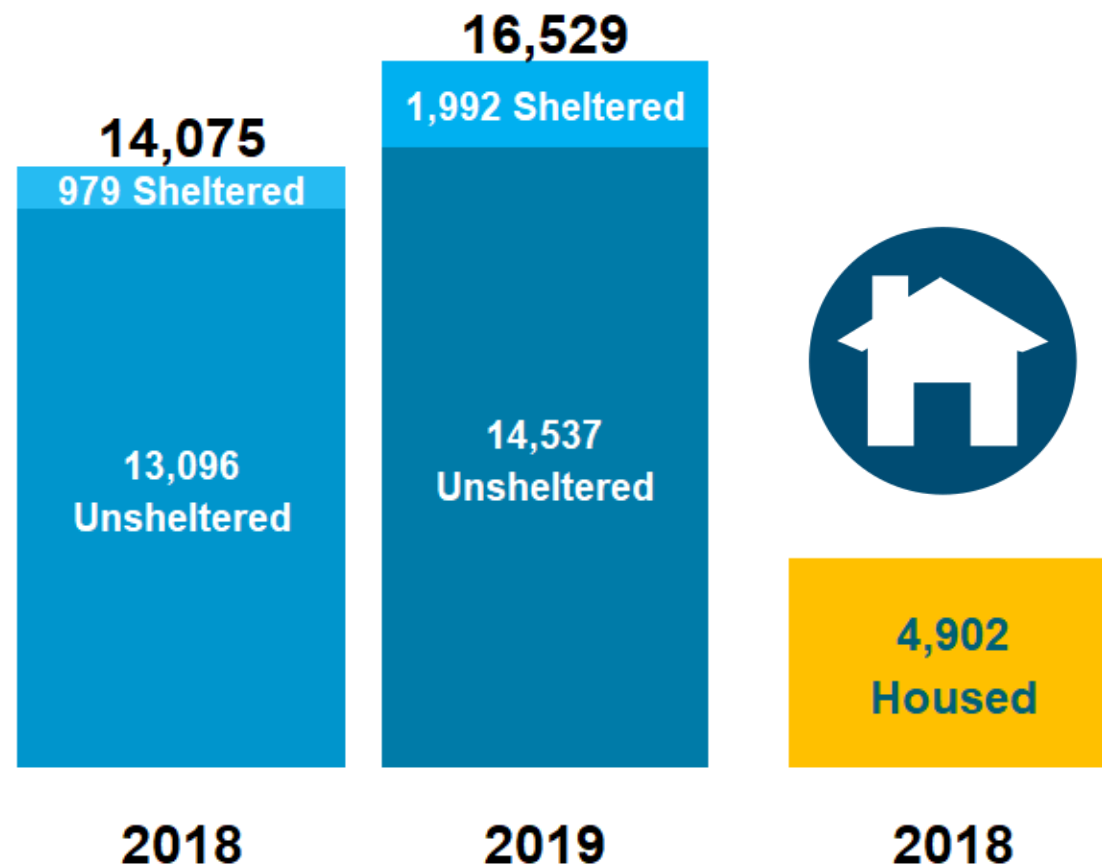
Numbers presented are for LA County

People experiencing chronic homelessness increased 17%

KEY FACTS:

- Intensive case management capacity expanded within Supportive Housing
- Newly built Supportive Housing over the next two years including HHH
- Financial management and legal services for people experiencing homelessness
- Decreasing barriers for access to housing for those most in need

Chronically Homeless Persons

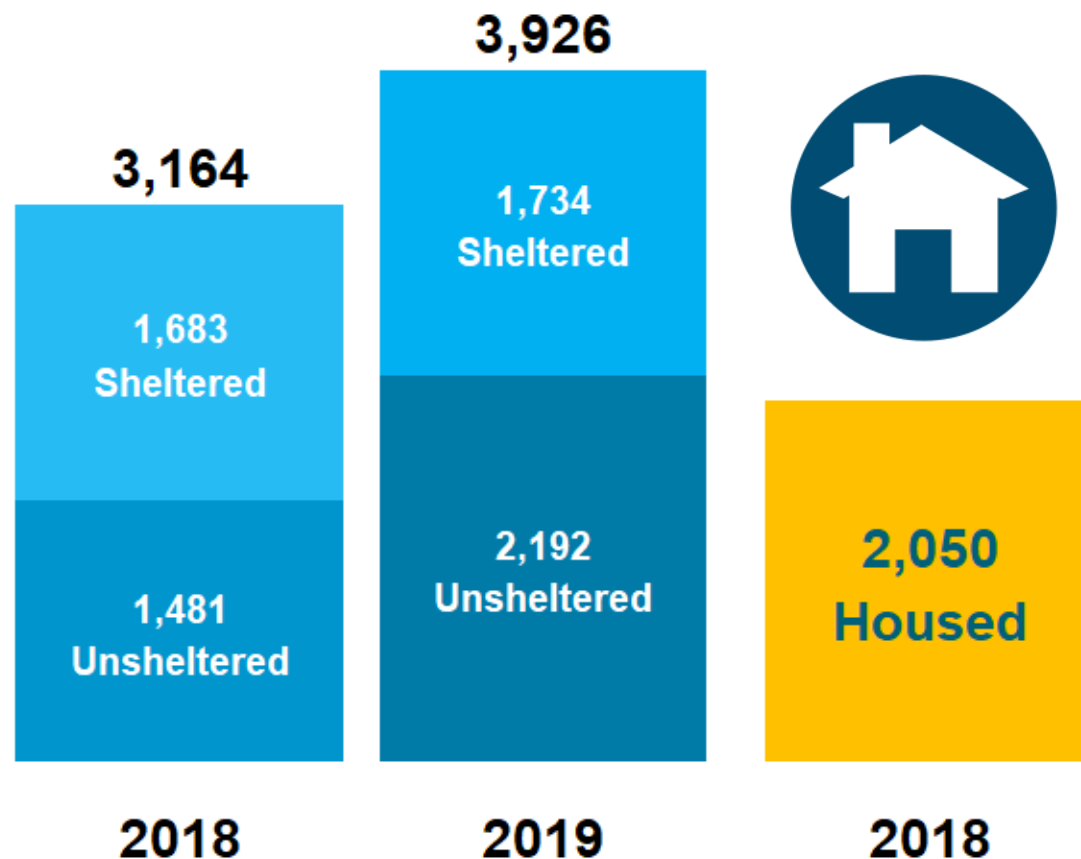


Number housed includes data from the HMIS and from DHS.

Numbers presented are for LA County

Youth homelessness increased 24%

Youth experiencing homelessness
LA CoC*



KEY FACTS:

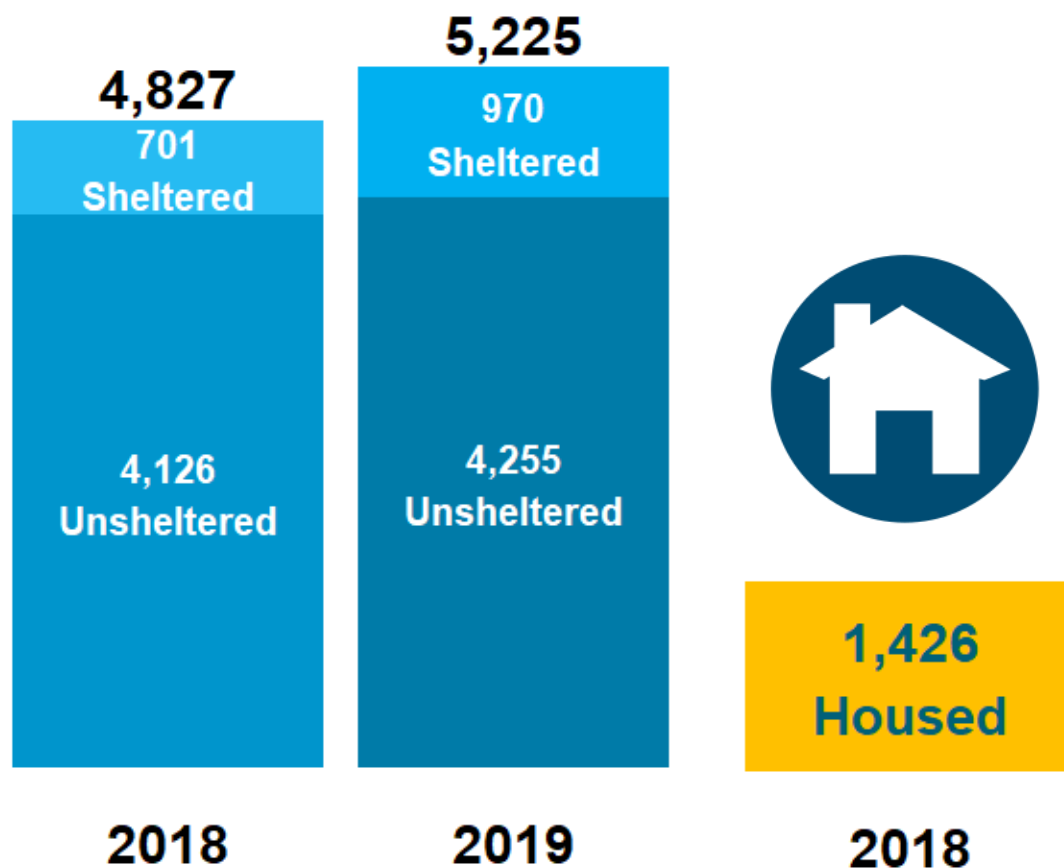
- Prevention-focused collaboration with key partners including DCFS and Probation
- Youth-specific interim housing expansion
- Youth-specific rapid re-housing expansion
- Host Home and Youth Family Reconnection programs launched

*Youth population includes 18-24 year olds and their children

*Numbers presented are for LA CoC, excluding Glendale, Pasadena, and Long Beach CoCs

Senior homelessness increased by 8%

Population aged 62+
LA CoC*



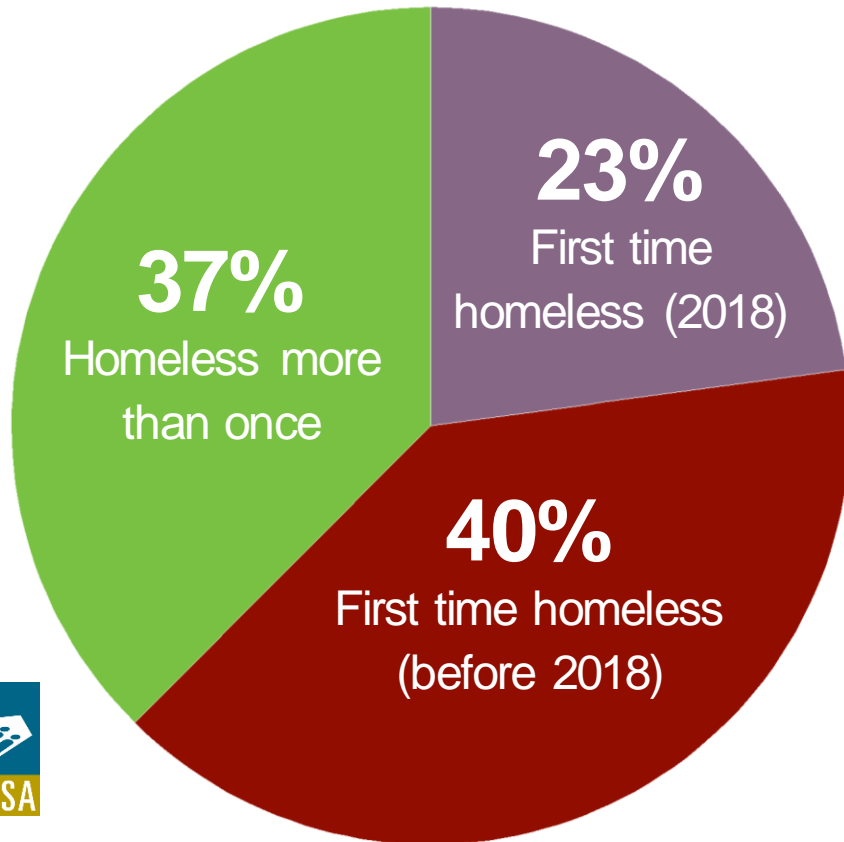
KEY FACTS:

- Workgroup of government agencies and community partners to strengthen LA County's response for seniors
- Outreach at senior centers and senior meal sites
- Legal assistance and temporary rental subsidies to help seniors stay in their homes
- Partnership with Adult Protective Services
- 150 new older adults interim housing beds

*LA CoC excludes Glendale, Pasadena, and Long Beach CoCs

Demographic Snapshots

53%²⁰ of people experiencing first-time homelessness cited "Economic Hardship" as a leading factor



More than half of unsheltered adults are on their first episode of homelessness

About a quarter of unsheltered adults lost their housing in 2018 and are experiencing homelessness for the first time*

*LA CoC excludes Glendale, Pasadena, and Long Beach CoCs

KEY FACTS:

- New housing programs and system investments for survivors
- Confidential processes for matching to housing was developed
- Emergency Transfer Plan process for survivors created
- 177 new rapid re-housing slots created
- Countywide system coordination increased

5%

of people report experiencing homelessness because they are fleeing domestic/intimate partner violence

89%

are adults (individuals and adult-headed families)

54.8%
are female

43.1%
are male

2.1%
are transgender



Demographic summary of people experiencing domestic violence

29% of people experiencing homelessness report a serious mental illness and/or substance use disorder

71%

29%

DO have a serious mental illness and/or report substance use disorder

DO NOT have a serious mental illness and/or report substance use disorder

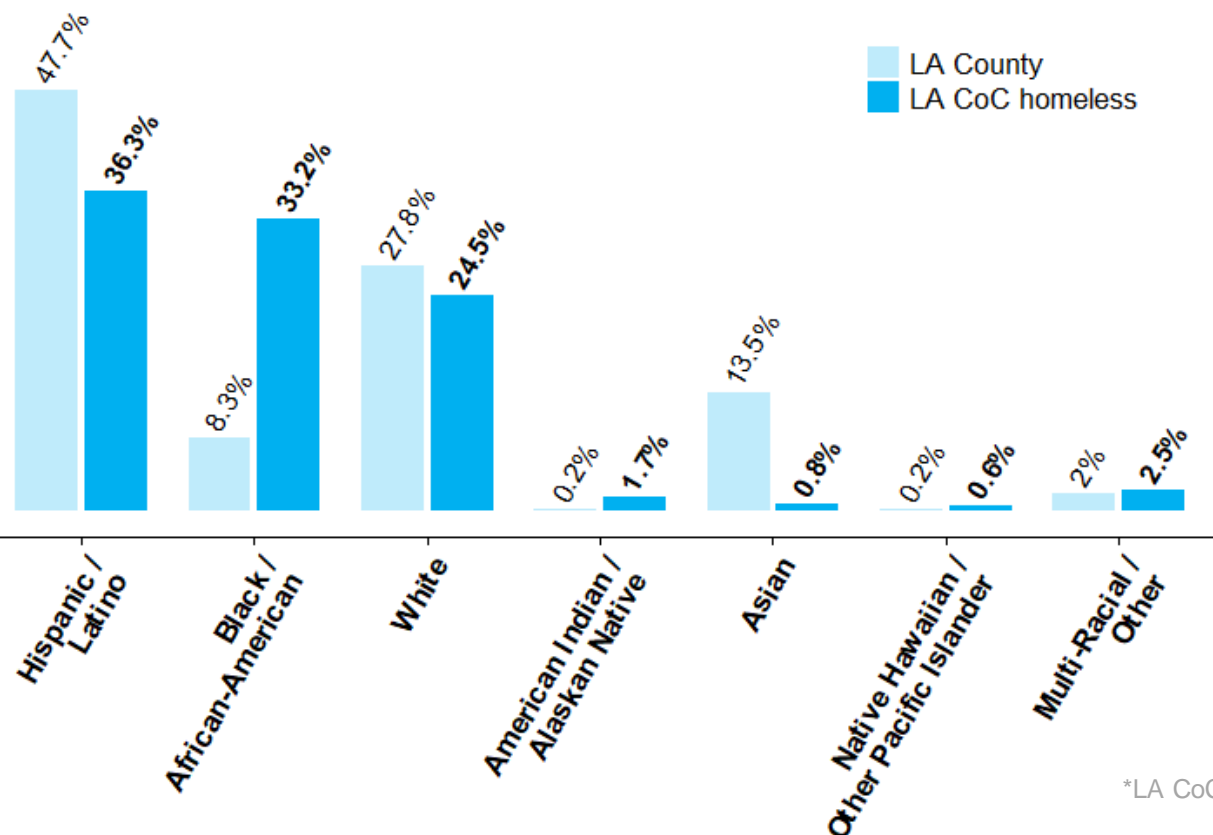
KEY FACTS:

- Intensive case management services provided to over 900 people with severe mental illness
- Expanded interdisciplinary outreach through Department of Mental Health
- 5 new Mental Health Urgent Care and Sobering Centers on Skid Row

KEY FACTS:

- Black people in LA continue to be 4 times more likely to experience homelessness
- Ad Hoc Committee On Black People Experiencing Homelessness – continued implementation of 67 recommendations
- 200 new interim housing beds for women
- Ad Hoc Committee On Women and Homelessness – continued implementation of 53 recommendations

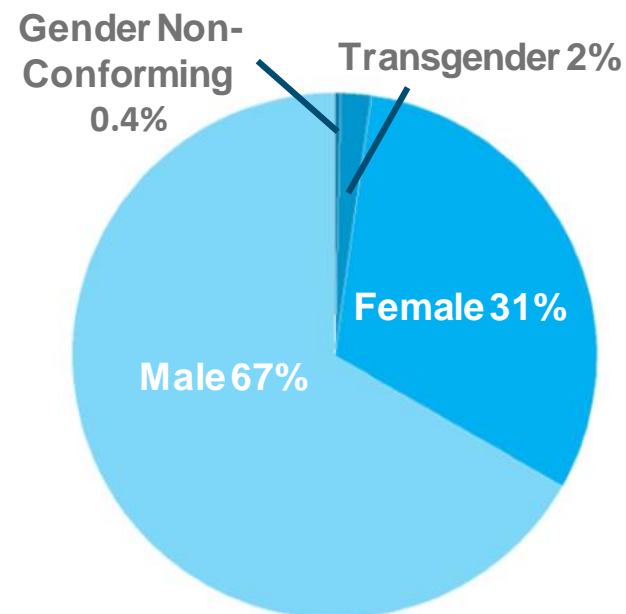
Total Homeless Population by Race and Ethnicity Los Angeles CoC*



*LA CoC excludes Glendale, Pasadena, and Long Beach CoCs

** LA County prevalence from US Census Bureau, 2010 Census

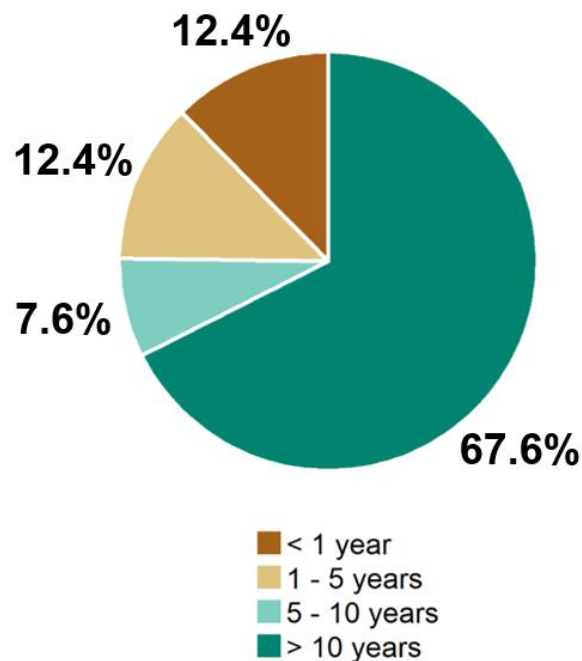
Total Homeless Population by Gender Los Angeles CoC*



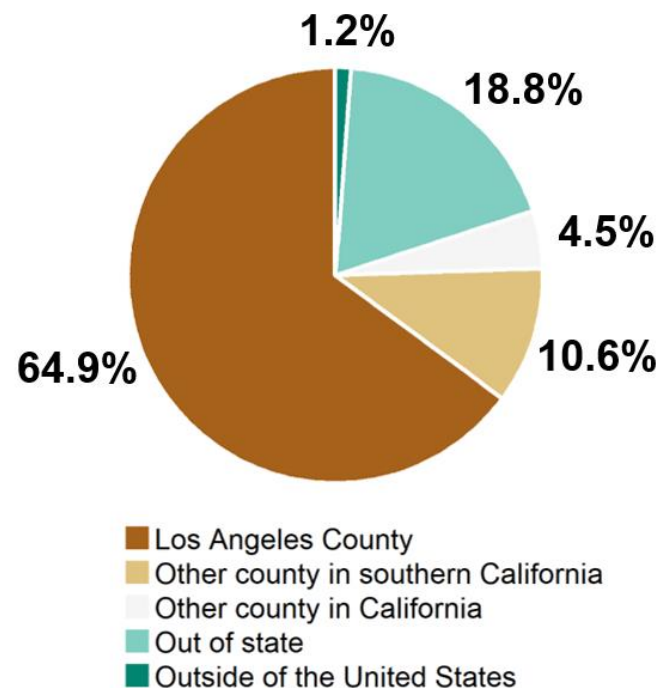
Demographic summary by race/ethnicity and by gender

Majority of people experiencing homelessness have lived in LA County more than 10 years

Length of Time in LA County
Unsheltered Adults 25+ & Children in Adult Families
LA CoC*, 2019

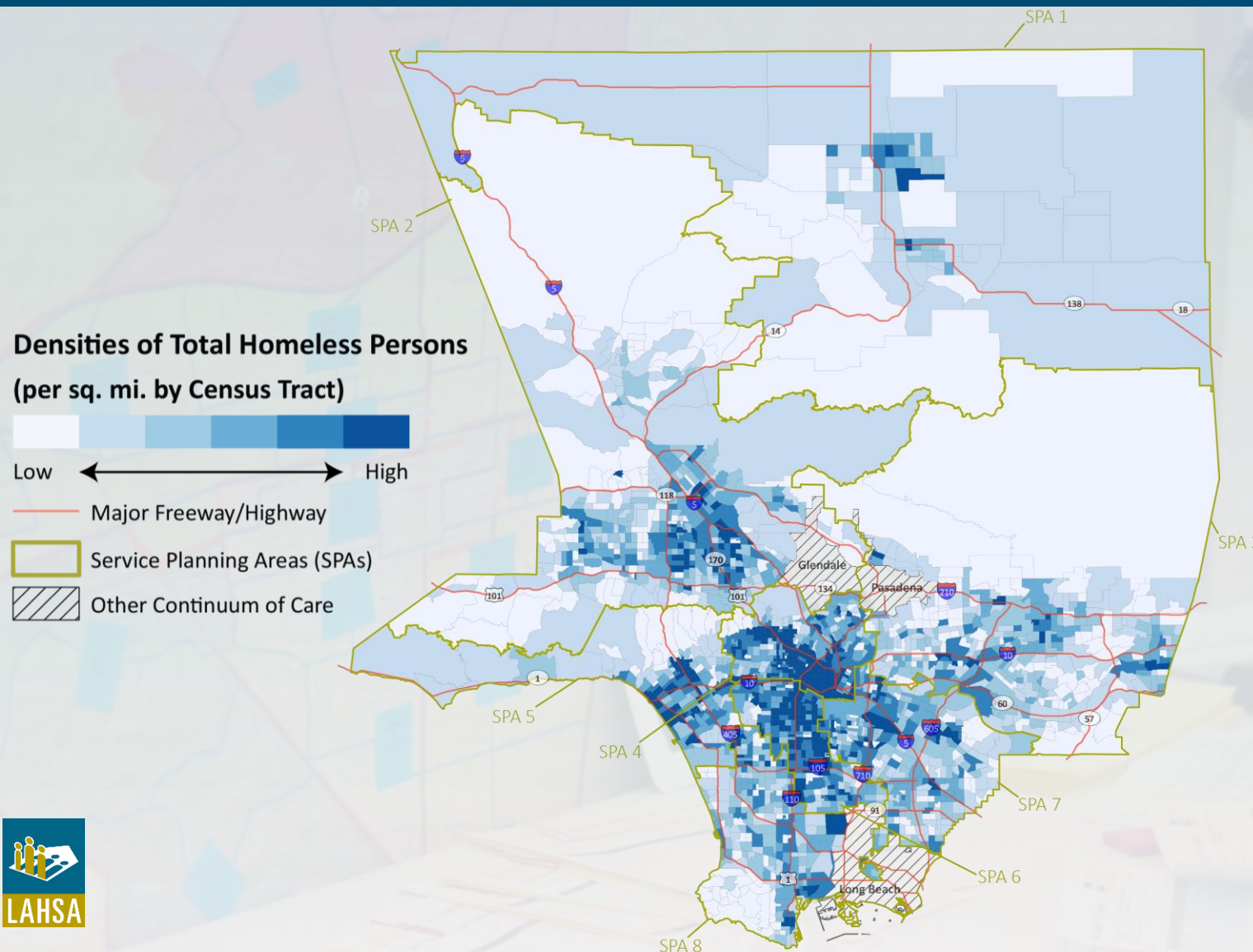


Place of Residence Before Becoming Homeless
Unsheltered Adults 25+ & Children in Adult Families
LA CoC*, 2019



*LA CoC excludes Glendale, Pasadena, and Long Beach CoCs

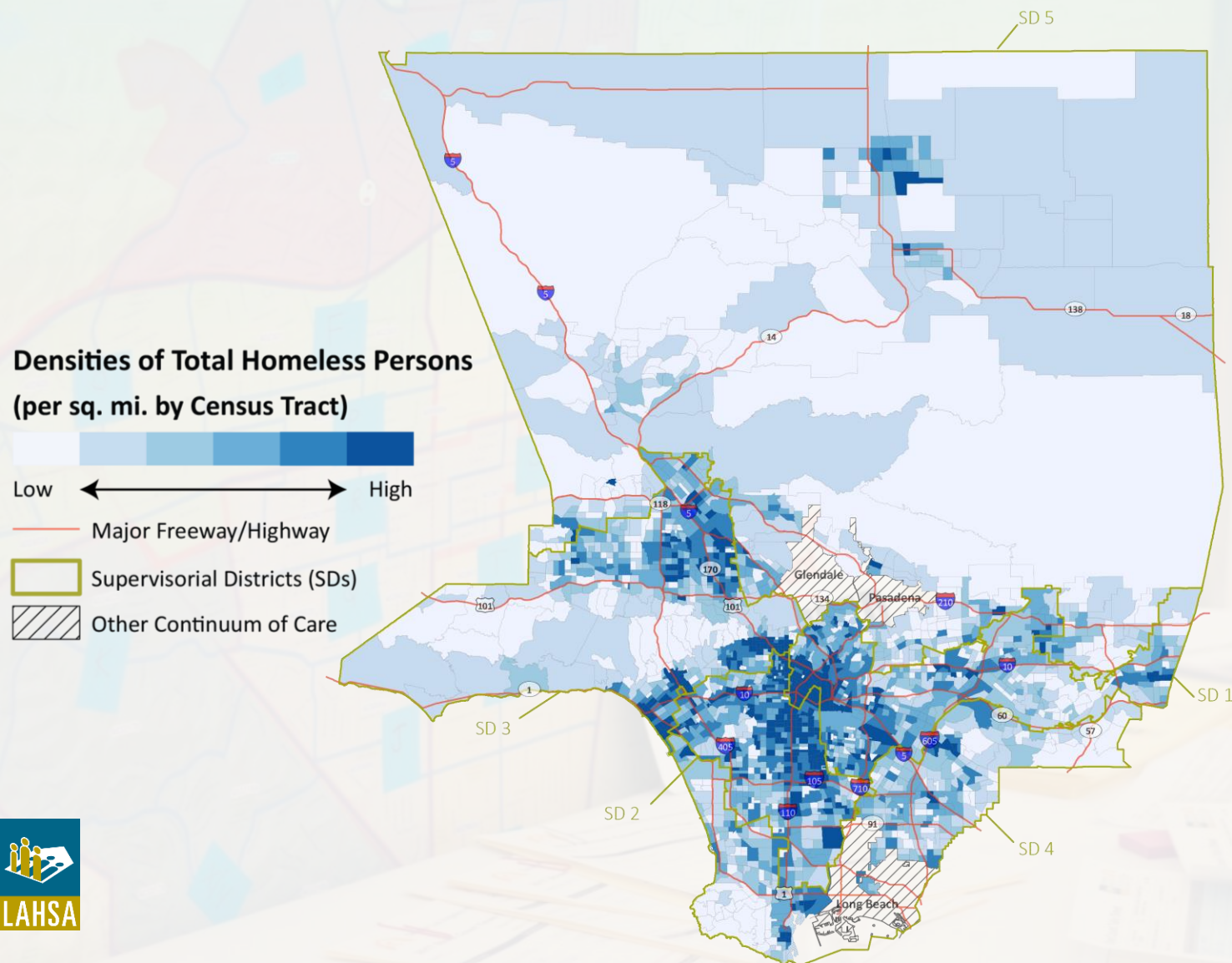
Count Results by Service Planning Area



Service Planning Area (SPA)	2018	2019	% Change
1- Antelope Valley	3,203	3,293	+3%
2- San Fernando Valley	7,738	8,047	+4%
3- San Gabriel Valley	4,282	5,021	+17%
4- Metro Los Angeles	14,218	16,401	+15%
5- West	4,401	5,223	+19%
6- South	8,343	9,629	+15%
7- East	4,569	5,040	+10%
8- South Bay	6,011	6,282	+5%
Totals	52,765	58,936	+12%

SPA 2 includes Glendale, SPA 3 includes Pasadena, and SPA 8 includes Long Beach

Count Results by **Supervisory District**



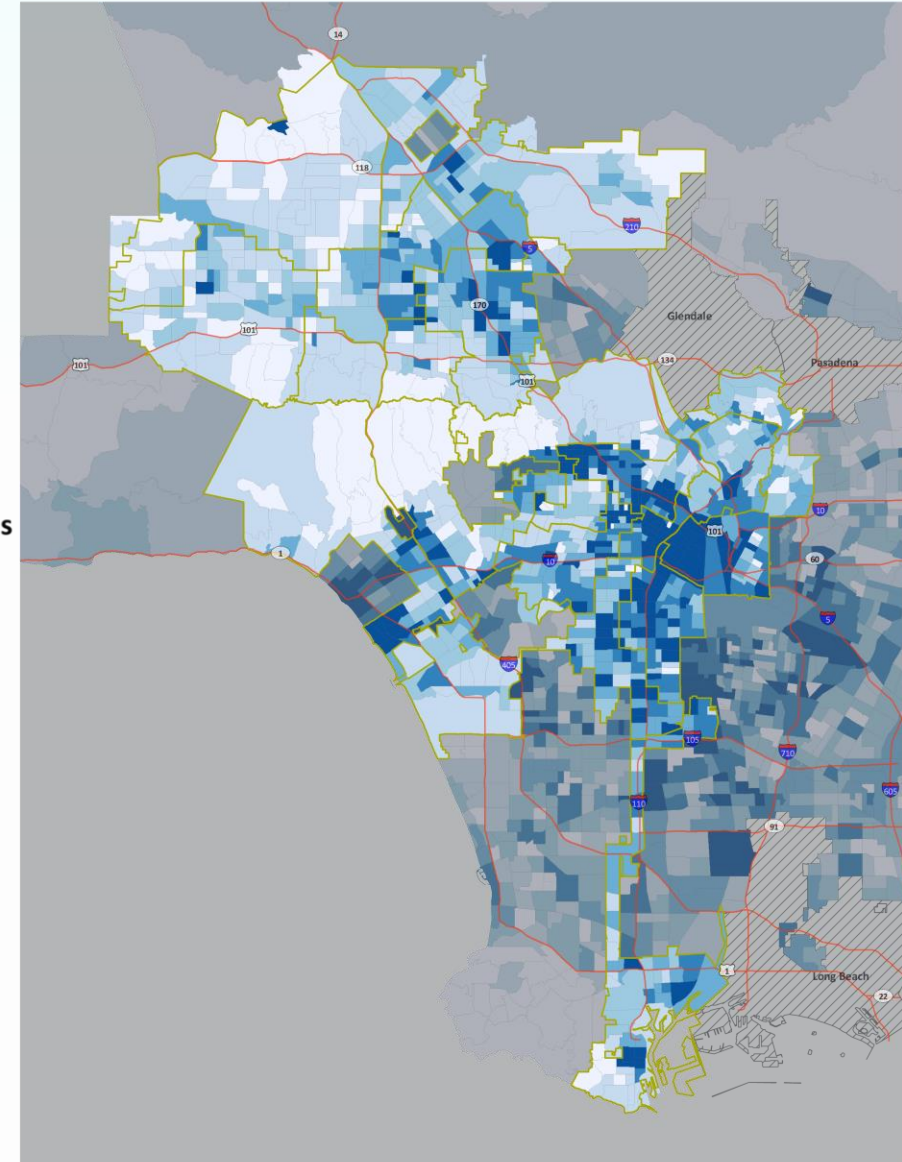
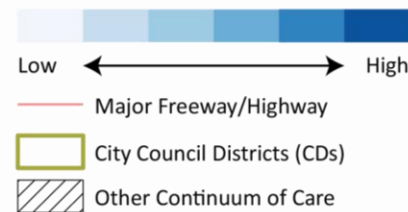
Supervisory District (SD)	2018	2019	% Change
1	12,530	14,012	+12%
2	16,561	19,293	+16%
3	12,023	12,909	+7%
4	6,052	6,891	+14%
5	5,599	5,831	+4%
Totals	52,765	58,936	+12%

SD 4 includes Long Beach, SD 5 includes Glendale and Pasadena CoC counts

Count Results by City Council District

City Council District (CD)	2018	2019	% Change
1	2,452	2,791	+14%
2	1,283	1,678	+31%
3	607	885	+46%
4	777	1,187	+53%
5	883	1,087	+23%
6	2,825	2,642	-6%
7	1,259	907	-28%
8	2,131	2,597	+22%
9	3,224	4,455	+38%
10	1,310	1,647	+26%
11	2,033	2,284	+12%
12	647	660	+2%
13	2,996	2,983	0%
14	7,068	7,896	+12%
15	1,791	2,601	+45%
Totals	31,285	36,300	+16%

Densities of Total Homeless Persons
(per sq. mi. by Census Tract)



Thanks to the investments made by the people of LA County, **thousands of people** have a home tonight. Our urgent mission continues to help those who don't.



LAHSA

Our system is helping more people than ever but we must address inflow into homelessness





**We're all in this together,
and **you can help!**
Say **YES** to more housing
in our neighborhoods.**

1. Support more interim and supportive housing in your local community; Join the Everyone In Campaign at <https://everyoneinla.org>
2. Advocate for expanded state and federal funding for affordable housing and homeless services at <https://www.lahsa.org/policy/legislative-affairs>
3. Volunteer at your local homeless service agency at <https://www.lahsa.org/get-involved>
4. Volunteer for the 2020 Street Count on January 21, 22, and 23 at <https://www.theycountwillyou.org/>